

# Emergency Preparedness Plan (EPP)

**April-2023**



## **National Development Programme (NDP)**

NDP Bhaban, Bagbari, Shahid Nagar, Kamarkhanda, Sirajgonj-6703

Tel: 0751-63870-71; Mobile: 01713-383100, Fax: 0751-63877

E-mail: [akhan\\_ndp@yahoo.com](mailto:akhan_ndp@yahoo.com), Website: [WWW.ndpbd.org](http://WWW.ndpbd.org)

Document history:

Activity	Date	Lead Person	Comments
EPP first developed	01/04/2009	Kazi Masuduzzaman Poll	
Most recent update performed	15/04/2023	Md. Atiqur Rahman	
Date of next update scheduled (within 12 months)	30/04/2024	Md. Atiqur Rahman	
Endorsed by Director-PMR&E	20/04/2023	Kazi Masuduzzaman Poll	
Endorsed by Director-Program	20/04/2023	Kazi Masuduzzaman Poll	
Endorsed by ED	30/04/2023	Kazi Masuduzzaman Poll	
Endorsed by lead member emergency unit	15/04/2023	Kazi Masuduzzaman Poll	
Other activity:			

---

This workbook is a part of the NDP Emergency Preparedness Planning (EPP) Guidelines, and is designed to provide a standardized template for documenting NDP Emergency Preparedness Plans. Refer to the EPP Guidelines for instructions on completing the workbook.

## TABLE OF CONTENTS

<b>1. EXECUTIVE SUMMARY.....</b>	<b>4</b>
<b>2. THE EMERGENCY RESPONSE TEAM (ERT) .....</b>	<b>7</b>
<b>3. RISK ANALYSIS .....</b>	<b>10</b>
<b>4. NDP CAPACITY TO RESPOND.....</b>	<b>13</b>
<b>5. EMERGENCY RESPONSE STRATEGY- SCENARIO 1:.....</b>	<b>16</b>
<b>6. SCENARIO DESCRIPTION AND NEEDS ANALYSIS.....</b>	<b>16</b>
<b>7. EARLY WARNING AND TRIGGER INDICATORS.....</b>	<b>20</b>
<b>8. GOALS AND OBJECTIVES OF NDP RESPONSE.....</b>	<b>21</b>
<b>9. PROPOSED NDP RESPONSE.....</b>	<b>21</b>
<b>10. FOOD PACKAGE ITEM REQUIREMENTS.....</b>	<b>22</b>
<b>11. LOGISTICS AND EQUIPMENT REQUIREMENTS.....</b>	<b>26</b>
<b>12. FUNDING TARGET.....</b>	<b>27</b>

## 1. Executive Summary:

Disaster in Bangladesh especially in Northern District like Sirajgonj, Bogra, Pabna, Nator is an almost annual nature of people's life that is to large extent due to its geographical location and natural system. Annually results in loss of human lives and extensive damage to properties as well as resources. Traditionally, individuals and rural communities have been left to develop their own coping mechanism for minimizing the effects of disaster but as a result of limited resources and changing hydrologic conditions many household were not able to protect them properly. The river Jamuna and its channel and tributaries have covered the planned. During the rainy season excessive rainfall and onrush water from the upstream inundates the island chars, mainland and the basin areas and submerges the localities causing loss of human and animal lives and other movable and in movable properties every year. The unbearable sorrows and pains of the community cannot be narrated in languages. Disaster mainly caused by the giant flood is a common phenomenon of the areas. They become helpless and live a very measurable life and sometime they become compelled to leave their homesteads and start a nomadic life. Frequent disaster and natural calamities like storm, floods, droughts, sands filling, cold waves etc always disrupt the normal livelihoods causing seasonal unemployment, food crisis, suffering from various water borne communicable diseases, malnutrition, mass illiteracy, ignorance etc.

To protect the flood, drought, cold wave, river erosion affected community from miseries and vulnerabilities and to capacitate them to combat with disaster difficulties this Emergency preparedness plan has developed by NDP. NDP is the pre-qualified partner of UN organization, WFP, Plan Bangladesh and similarly NDP has 14 associate partner organization for emergency response in the northern region of Bangladesh.

The area considered to the plan

District	Upazila	# of Union/ Pourasava	Remarks
Sirajgonj	Sahazadpur	14	
	Ullapara	15	
	Chuhali	7	
	Belkuchi	7	
	Kamarkhanda	4	
	Sirajgonj Sadar	11	
	Taras	9	
	Raygonj	10	
	Kazipur	11	
<b>Sub Total</b>	<b>9</b>	<b>88</b>	
Bogra	Dhunot	4	
	Sariakandi	5	
	Sahajanpur	6	
	Serpur	7	
	Gabtolli	6	
<b>Sub Total</b>	<b>5</b>	<b>28</b>	

District	Upazila	# of Union/ Pourasava	Remarks
Pabna	Sathia	5	
	Faridpur	6	
	Chatmohor	4	
	Bhangura	7	
	Bera	8	
	Ishhurdi	5	
Sub Total	6	35	
Nator	Sadar	13	
	Lalpur	05	
	Gurudaspur	09	
	Boraigram	08	
	Naldanga	02	
Sub Total	5	37	
Jamalpur	Dewanganj	7	
	Melandaha	7	
	Madarganj	8	
	Jamalpur Sadar	6	
	Bakshiganj	5	
	Sharishabari	8	
Sub Total	6	42	
Kurigram	Ulipur	4	
	Chilmari	6	
	Kurigram Sadar	5	
	Rajarhat	5	
	Roumari	5	
	Rajibpur	5	
	6	30	
Grand Total	38 Upazilas	261 Unions	

## **1.1 Nature and pattern of Hazard and changing trend:**

The Flood, River Erosion, Cold-wave, Tornado, Draught etc are common phenomenon and shows their destructive character in these areas.

### **Flood:**

Flood is commonly in Sirajgonj, Bogra, and Pabna districts. Specially, the Upazila like, Sirajgonj 9 upazilas, Bera and Bhangura under Pabna District, Dhunot and Sariakandi Upazila under Bogra district, are most vulnerable to flood. The historic flood of 1988, 1998, 2004 and 2007 were damaged these areas. Lastly in 2007, two spells of devastating flood hits these areas. Frequency of floods continues to increase seriousness causing extensive crop damage occur on every three to five years. Floods have become much more unpredictable than before, in terms of both onset and scale. Uncertainty of flood situation found in that area. Sometimes water increase and sometimes decrease Different disaster changes its trend. Flood water increase normally last June and severe in last July and August. Now its attack September also. Sometimes water increase and sometimes decrease .Flood situation continuing many days .Some times its attack on two spells.Its trend to damage aman and rabi crops.

### **River erosion:**

River erosion is one of the silent disasters of the river bank peoples destroys everything. It comes slowly but its effect is very harmful and unrecoverable to peoples. Peoples shifted their houses many times. Agriculture dependent eroded people's sufferings are very much .They becomes jobless and asset less serious river erosion found both the river bank of Jamuna and Padma. It increases rapidly. Most vulnerable area is kazipur, Sirajgonj Sadar, Belkuchi,Sahazadpur and Chowhali Upazilas under Sirajgonj District, Sariakandi and Dhunot Upazilas under Bogra district & Bera Upazila under Pabna District. Before rainy season it's started and continuing up to winter season. Serious erosion found in times of flood. Its occurs within a short time .Its change its way .No one can predict the way of erosion. No warning system develops for river erosion.

### **Cold wave:**

Winter season in our country start from November to first February. In times of winter temperature falls rapidly. These areas peoples are very poor. Winter comes in that area after normal/abnormal flood. In this flood they lost their asset .Low temperature create great problem for peoples who have no clothes Sometimes cold wave blows in that area .Fog found all the day. Peoples cannot see the sun more than seven days. They are affected by different types of diseases. Seed bed of rice damage, rabi crops also damage. Due to heavy fog peoples cannot go to work. Sometimes rain occur it that season. Cold wave changes its trend every year. Duration of cold wave not regular. Sometimes it found in December and sometimes in January .In addition of rain it is very harmful for poor man and crops. These area also affected by cold wave for near Himalayan Side. In Rajshahi region temperature falls near Padma river.

**Tornado:**

Tornado hits the two transitional periods between southwest and northeast monsoons over that area characterized by local severe storms. The transitional periods are usually referred to as pre-monsoon(March-May),and post-monsoon(October-November).It is the pre-monsoon period when most of the abnormal rainfall or drought conditions frequently occur in different parts of Bangladesh. Seasonal storms locally popular as nor'easter (Kalboishaki). 21<sup>st</sup> March 2005 a nor'easter hit in Sirajgonj, Bogra, and some part of Pabna district. In this time different types of storm hit that area.

**Draught:**

Drought is one of the common disaster in the northern part of Bangladesh .In March to May severe drought found that area .Some times after October to March rainfall in our country is very low and nill .It affects ground water level. Char land is sandy and its water holding capacity is very low. Sometimes heat waves blow that area. Peoples fall on dehydration and different types of diseases. Some times they attack by heat stroke in such a sandy condition. Field crops like Aman jute are burn by high temperature. Some crack found in crop field due less of water. Specially the most vulnerable area is Nator Sadar and Lalpur Upazila under Nator district.

## 2. Emergency Response Team (ERT)

### Objectives of ERT

- Coordinate the HO's emergency preparedness and response
- Raise awareness about the cross-cutting nature of emergency preparedness and response among all units of the HO's
- Allocate responsibilities among staff
- Identify areas where gaps in mandates or lack of operational capacity exist
- Ensure that NDP staff understands and knows how to apply CI and other international protocols, standards and guidelines regarding to emergency preparedness and response
- Ensure the EPP is kept up to date and used to inform strategic and programmatic planning processes.

ERT FUNCTION	Name and title	Name of back-up	Preparedness roles	Response roles
Policy Advisor,	Alauddin Khan Executive Director	Md. Shah Azad Iqbal Director – Program	To prepared a ER Policy	Guidance to ERT Team and management as per policy
Fundraising	Alauddin Khan Executive Director	Md. Shah Azad Iqbal Director – Program	Communicate to the like minded organization/Donor for support	Insuring the current status and collect fund
Grants Management	D. ABM Shazzad Hossain Director (P&RM)	Md. Shah Azad Iqbal Director – Program	Prepared a plan how to manage the Grants during response	To manage all types of Grants as per plan.
Proposal Writer	D. ABM Shazzad Hossain Director (P&RM)	Atiqur Rahman Manager (Research & Documentation)	To prepare a template for proposal writing	To prepare a proposal as of situation and send to the Donors
Emergency Response Coordinator	D. ABM Shazzad Hossain Director (P&RM)	Kazi Masuduzzaman Poll (Deputy Director-M&E)	Coordinate to develop an EPP	Over all Coordinate operations of disaster management interventions
Emergency Response Field Coordinator	Kazi Masuduzzaman Poll (Deputy Director-M&E)	Shahidul Islam (Assistant Director)	To prepare a field coordination plan how to control the field during Emergency	As per plan operate the emergency field
Logistics and warehouse Management	Kazi Masuduzzaman Poll (Deputy Director-M&E)	Mahamudul Hasan (Manager – NDP,TC)	To prepare a plan how to insuring the logistics support and Manage the warehouse	<ul style="list-style-type: none"> <li>- Timely insuring the all types of logistics Support.</li> <li>- Timely material/goods in and out</li> <li>- Checkup the goods quality and warehouse environment</li> <li>- Communicate with vehicle, vendor, donor representative and</li> </ul>

<b>ERT FUNCTION</b>	<b>Name and title</b>	<b>Name of back- up</b>	<b>Preparedness roles</b>	<b>Response roles</b>
				others. - In/out goods report preparation with quantity and quality and provide them where necessary -
Finance Coordinator	Milon Kumar Ray Director (F&A)	Mir Tansen Hossain Senior Manager (F&A)	- Revised the NDP Financial policy considering disaster and incorporate the significant clause where necessary	Timely and frequently Insuring the financial support as per policy
Gender Coordinator	Md. Shawkuat Hossain (Manager - Training)	Soma Das (Deputy Manager - Training)	To developed a gender policy considering emergency response	According the gender policy to take necessary initiative
Assessment	Md. Labu Mia (Manager (M&E)	Md. Shafiul Kafi (AM-M&E)	To take preparation how to assess the situation during emergency	To assess the situation of vulnerability and prepare a report and provide the management
Media Coordinator	Atiqur Rahman Manager (Research & Documentation)	Shipon Chandra Nag (AM –Edu. and Dis.)	Communicate with the media and motivate them	- To provide the most vulnerable areas information and photograph. Also request them to circulate by printing/electronic media.
Media Spokes person	Md. Shah Azad Iqbal Director – Program	Jubaer Jahan Khan Deputy Director (Programme)		Accompany and assistance with the Donner/ Foreigner/any Media
Information Management	Moslem Uddin Ahmed (Director-CSP)	Tahomina Khatun (Receptionist)	To prepared upazila wise information collection and management team and orient them	Provide information collection tool to the upazila focal person. Continue communicate with them. Information collection, compilation and provide them where necessary
Monitoring and Evaluation	Kazi Masuduzzaman Poll Deputy Director (M&E)	Md. Shafiul Kafi Assistant Manager (M&E)	Prepare M&E system and tools/techniques	- On going activities monitoring - Reporting to the authority - Post evaluation and impact assessment
Quality and Accountability	KM. Jahangir Alam Assistant Manager (Audit)	Md. Abdul Mannan Deputy Manager (Audit)	- Formation a Quality and Accountability team. - Orient to the ERT members and	- To insure the Quality and Accountability during emergency.

<b>ERT FUNCTION</b>	<b>Name and title</b>	<b>Name of back- up</b>	<b>Preparedness roles</b>	<b>Response roles</b>
			Upazila Focal person on Quality and Accountabilities	
Safety and Security	Mahamudul Hasan (Manager, TC)	Md. Shakhawat Hossain Khan (Manager- Training)	<ul style="list-style-type: none"> <li>- Safety and Security tem formation</li> <li>- Skilled up the Safety and Security team members</li> </ul>	<ul style="list-style-type: none"> <li>- Insuring the safety and security during emergency</li> <li>- Followup the activities of Safety and Security team members</li> </ul>
Procurement	Md. Sujamanur Rahman, Deputy Manager (Procurement)	Md. Safiul Alam Khan Choudhur Assistant Administrative Officer	<ul style="list-style-type: none"> <li>- Revised the NDP Procurement policy considering disaster and incorporate the significant clause where necessary</li> </ul>	<ul style="list-style-type: none"> <li>- Communicate with selected vendor, Werehouse, Donor representative and others</li> <li>- Timely material purchase and supply</li> <li>- Insuring quality and quantity</li> </ul>
IT & Telecommunica tions	ATM Rafiul Hasan (IT)	Md. Rasel Mahmud Assistant IT Officer	<ul style="list-style-type: none"> <li>- Website update</li> <li>- Face book uploading</li> <li>- Quick communication system dev.</li> <li>- CRM dev.</li> </ul>	<ul style="list-style-type: none"> <li>- collect information and shearing all electronics social media</li> <li>- Whenever an event done then Quick information uploading in website and face book</li> <li>- When any function will be disrupted about IT then will Quick response</li> </ul>
Administration	Sumia Marium Assistant Director (HR)	Nayajni Talukder, Manager (Administrative)	<ul style="list-style-type: none"> <li>- Revise the Upazila wise disaster focal person</li> <li>- Assist to prepare EPP</li> </ul>	<ul style="list-style-type: none"> <li>- Manage human resource</li> <li>- Provide JD who will involve in ER</li> <li>- Provide involvement letter</li> <li>- Communication, follow-up and coordination with the all sectors</li> <li>- Provide all administrative and humanitarian support to the ERT</li> </ul>
Human Resources	Ms. Sumia Marium Assistant Director (HR)	Nayajni Talukder, Manager (Administrative)	<ul style="list-style-type: none"> <li>-Orient on Emergency response to the Upazila disaster focal person</li> <li>- Volunteer selection for disaster response.</li> <li>-Assist to prepare EPP</li> </ul>	<ul style="list-style-type: none"> <li>- Insuring the Human resources for emergency response.</li> </ul>

ERT FUNCTION	Name and title	Name of back- up	Preparedness roles	Response roles
Health and medical service	Mst. Sopna Mondal (Paramedics)	Rohima Khatun ( Paramedics)	- Inform the paramedics team - Develop a response plan	- Provide and lead medical team and all medical assistance.

NDP has 240 staff currently working in the area and are ready for / Roster for Emergency Deployment (RED) or could be included in the RED and deployed to emergencies in other countries.

### 3. Risk analysis:

## FLOOD RISK IN Sirajganj

### 2.1 RISK OVERVIEW

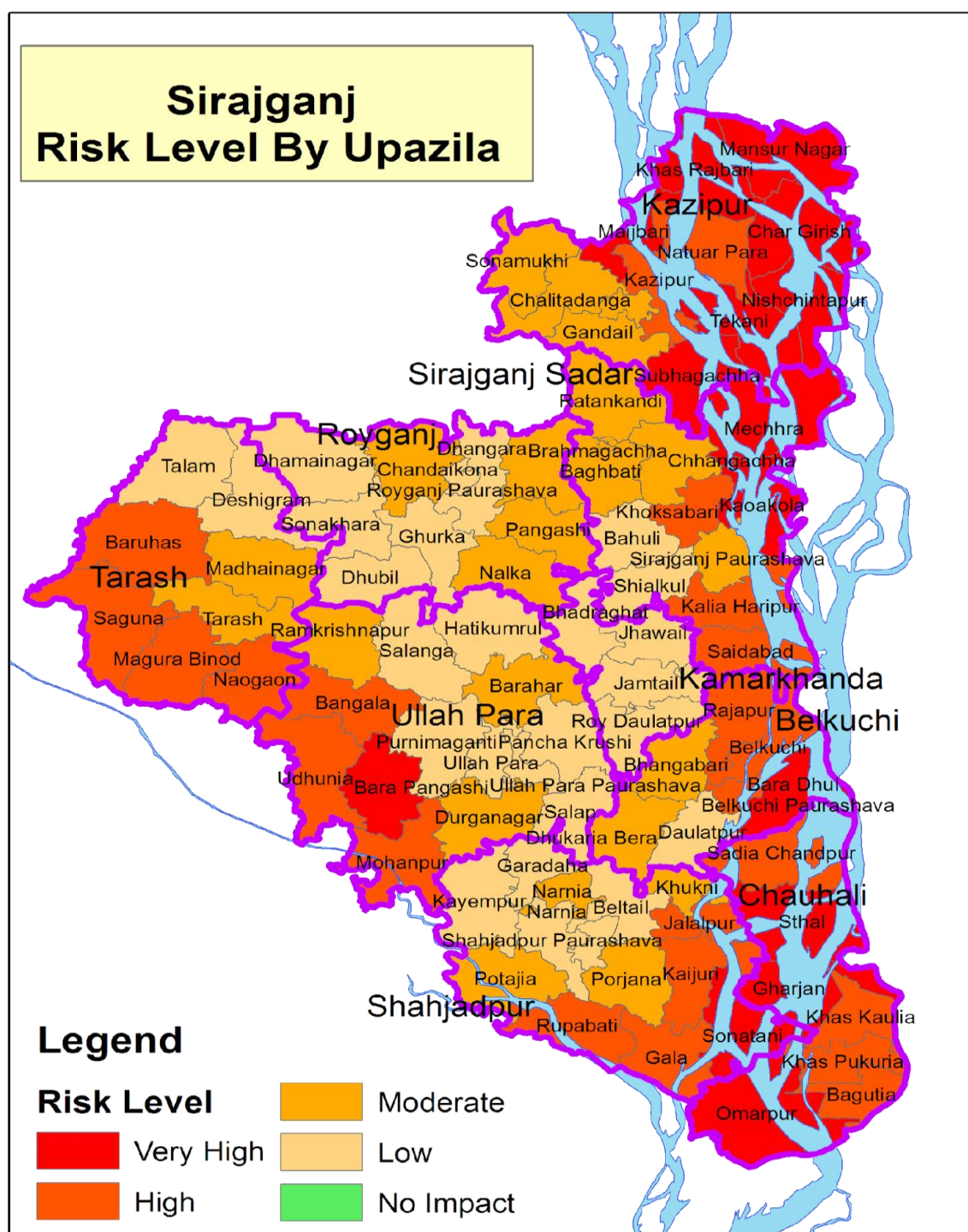
The risk analysis for quantifying the risk, based on the two forces, its hazards and the exposure of people and other side is the vulnerability of people to those hazards including lack of capacity to cope with them. Risk analysis provides the choice of geographical areas for actions.

The [climate-related multi-hazard risk index of Bangladesh](#) is combined of 24 indicators into three dimensions of risk: hazards, exposure, vulnerability (and lack of coping capacity). According to this report Sirajganj district is exposed to major disaster like flood and river bank erosion. The District with Very High Disaster Impact Level (7.0 in disaster impact index, 2014-2020) the district ranks 4<sup>th</sup> in disaster impact among 64 districts of Bangladesh. Where in Socioeconomic Vulnerability index with High vulnerability score of 4.6 Sirajganj ranks 32<sup>nd</sup>. But in composite hazard risk analysis the district ranks 4<sup>th</sup> with a Very High score of 6.5. Based on the shared understanding of impact and likelihoods stakeholders has been identify the risk seriousness of Upazila.

I m p a c t	Likelihood						Serious ness = Conseq uence x Likeliho od
	Seriousness	1 – Negligible	2 – Low	3 - Moderate	4 – High	5 – Very High	
	1 – Negligible						
	2 – Minor			Tarash, Ullahpara			
	3 – Moderate			Royganj	Belkuchi, Sirajganj sadar, Shahajadpur		
	4 – Severe					Chauhali Kazipur	
	5 – Critical						
Seriousness = Consequence x Likelihood							

## 2.2 UNION WISE RISK MATRIX

Based on the disaster impact scenario of the last five years, the risk matrix developed with the consensus among the local stakeholders'. The risk map below shows the level of risk in each Union of Sirajganj District.



## 2.3 IMPACT SCENARIO

Monsoon flood highly affects Sirajganj Districts almost every year. From 2014 to 2020 in flood affected 133,425 – 503,795 households with an average of 363,987 killing total 20 people in Sirajganj district. During this time 26,144 households were destroyed and 338,916 households were damaged inundating 797 Square km spiking up the risk level with 401 acre of river bank erosion. This refers to 184,134 HHs will be potentially exposed and 121,528 HHs will be potentially impacted in 2025 by 2 std of per 1000 affected/660 for formula.

### Potential Impact HH 2022

Upazila	Projected HH 2022	% Of Exposed Pop	Potential Exposed HH	Risk Level	Potential Exposed HH by 2022	Potential Impact HH
Belkuchi	88622	24%	19819	High	14864	9810
Chauhali	41356	28%	11245	Very High	11245	7421
Kamarkhanda	35197	17%	5675	No Risk	5675	3745
Kazipur	72630	20%	14227	Very High	14227	9390
Royganj	93366	21%	17665	Medium	13249	8744
Shahjadpur	150248	23%	31296	High	23472	15491
Sirajganj Sadar	146384	20%	27253	High	13626	8993
Tarash	58773	18%	9861	Low	2465	1627
Ullah Para	153350	19%	26254	Low	6564	4332
<b>Total</b>	<b>839926</b>		<b>163295</b>		<b>105387</b>	<b>69553</b>

### Severity of Need HH by Upazila

Upazila	Potential Impact HH	1-Minimal HH	2-Stress HH	3- Severe HH	4-Extreme HH
Belkuchi	9810	1962	1472	3434	2943
Chauhali	22264	4453	3340	7792	6679
Kamarkhanda	936	187	140	328	281
Kazipur	18780	3756	2817	6573	5634
Royganj	8744	1749	1312	3061	2623
Shahjadpur	5164	1033	775	1807	1549
Sirajganj Sadar	8993	1799	1349	3148	2698
Tarash	1627	325	244	569	488
Ullah Para	4332	866	650	1516	1300
<b>Total</b>	<b>80,650</b>	<b>16130</b>	<b>12099</b>	<b>28228</b>	<b>24195</b>

Note: Humanitarian community will complement the only extreme level of HH

**3.1 The historical disasters in the country for the past 15-20 years have been Sirajgonj:**

<b>Disaster</b>	<b>Year</b>	<b>Killed</b>	<b>Total. affected population</b>	<b>Mostly affected sector ( e.g. WASH, Shelter and Food security )</b>	<b>Total. Damaged amount</b>
Flood	1998	08	3,60,000	Agriculture, livelihood, water & sanitation, shelter	75 Crore
Flood	2004	07	3113140	Agriculture, livelihood, water & sanitation, shelter	50 Crore
Flood	2007	25	310000	Agriculture, livelihood, water & sanitation, shelter	100 Crore
Flood	2017	38	323000	Agriculture, livelihood, water & sanitation, shelter	300 Crore
Storm	2006	03	50900	Livelihood, shelter	10 Crore
Storm	2010	N/A	30000	Livelihood, shelter	17 Crore
Storm	2017	06	56800	Agriculture, Livelihood, shelter	35 Crore
River Erosion	Continues /Every year			Agriculture, livelihood, water & sanitation, shelter	10 Crore
Cold wave	After 2001 Continues /Every year		100000	Agriculture, livelihood,	10 crore

**Pabna 4 Upazilas: (Bera, Vangura, Sathia, and Faridpur)**

<b>Disaster</b>	<b>Year</b>	<b>Killed</b>	<b>Total. affected population</b>	<b>Mostly affected sector ( e.g. WASH, Shelter and Food security )</b>	<b>Total. Damaged amount</b>
Flood	2007	2	80000	Livelihood, shelter	20 Crore
Flood	2017	N/A	100000	Agriculture, Livelihood, shelter	75 Crore
Cold wave	After 2000 Continuing	7	40000	Agriculture, livelihood,	5 crore

**Bogra : 4 Upazilas (Sariakandi, Dhunot, Sahajanpur and Serpur)**

<b>Disaster</b>	<b>Year</b>	<b>Killed</b>	<b>Total. affected population</b>	<b>Mostly affected sector ( e.g. WASH, Shelter and Food security )</b>	<b>Total. Damaged amount</b>
Flood	1998	02	1,30,000	Agriculture, livelihood, water & sanitation, shelter	55 Crore
Flood	2004	01	90000	Agriculture, livelihood, water & sanitation, shelter	35 Crore

Flood	2007	4	100000	Agriculture, livelihood, water & sanitation, shelter	56 Crore
Flood	2017	16	100000	Agriculture, livelihood, water & sanitation, shelter	100 Crore
Storm	2006	0	10000	Livelihood, shelter	10 Crore
Storm	2016	2	8000	Livelihood, shelter	15 Crore
Cold wave	After 2001 Continue		60000	Agriculture, livelihood,	7 crore

### **Nator: 4 Upazilas (Nator Sadar, Lalpur, Gurudaspur and Boraigram)**

<b>Disaster</b>	<b>Year</b>	<b>Killed</b>	<b>Total. affected population</b>	<b>Mostly affected sector ( e.g. WASH, Shelter and Food security )</b>	<b>Total. Damaged amount</b>
Storm	2012	2	50000	Livelihood, shelter	10 Crore
Storm	2017	6	80000	Agriculture, Livelihood, shelter	25 Crore
Cold wave	After 2000 Continuing	7	40000	Agriculture, livelihood,	7 crore
Draught	After 1981 Continuing	11	120000	Agriculture, livelihood,	10 crore /year

### **3.2 The potential disasters the country could face in the next three years**

<b>Description</b>	<b>Scenario 1</b>	<b>Scenario 2</b>	<b>Scenario 3</b>
<b>Type of hazard</b>	Flood	River Erosion	Cold wave
<b>Total number of people affected</b>	-287905 HH and 1388327 Population in Sirajgonj District -120,000 Population in Pabna District -67,000 Population in Bogra Sariakandi and Dhunot Upazila	Every year at least 2000 HH will be affected by river erosion	Sirajgonj- 90000 Bogra- 20000 pabna- 10000 Nator- 12000
<b>Number of beneficiaries targeted by NDP response</b>	300000	1200 HH under Micro Finance Program in Sirajgonj Sadar Upazila	- 100000 -
<b>Geographical area affected</b>	- Sirajgonj, Bogra, pabna,	Sirajgonj	Sirajgonj, Bogra, pabna, and Nator
<b>Geographical area targeted by NDP response</b>	- 9 Upazilas and 91 Unions under Sirajgonj district. - Bera upazila of pabna district - Sariakani and Dhunot under Bogra district	- Sahazadpur, Belkuchi, Chowhali, Sirajgonj Sadar and Kazipur Upazilas under Sirajgonj district.	- 9 Upazilas and 91 Unions under Sirajgonj district. - Bera upazila of pabna district - Sariakani and Dhunot under Bogra district

Description	Scenario 1	Scenario 2	Scenario 3
<b>NDP interventions</b> (sectors of response)	Rescue and rehabilitation, Short term and long term Relief distribution (food and none food both), Treatment and post flood rehabilitation	- Disaster Management loan distribution	Blanket Distribution
<b>Fundraising target for NDP emergency response</b>			

**3.3 Based on both the historical and future risks, the potential disasters faced in the next few years are-**

#### SCENARIO ANALYSIS:

##### Sirajgonj:

Disaster Scenario	Probability (1-10)	Impact(1-10)	Risk level	Comments
Flood	7	9	63	Sirajgonj is the most flood prone area
River erosion	8	6	48	Most of the Upazila are located at the jamuna bank area
Storm	6	5	30	As sirajgonj is in the part vof the country where CDD is very common phenomenon
Cold Wave	9	7	56	

#### Scenario Analysis:

##### Nator:

Disaster Scenario	Probability (1-10)	Impact(1-10)	Risk level	Comments
Draught	10	9	90	Nator is the most draught prone area
Storm	6	5	30	As sirajgonj is in the part vof the country where CDD is very common phenomenon
Cold Wave	9	7	56	

#### Scenario Analysis:

##### Bogra:

Disaster Scenario	Probability (1-10)	Impact(1-10)	Risk level	Comments
Flood	7	9	63	Bogra is the most flood prone area
River erosion	8	6	48	Some Upazilas are located at the bank of jamuna river

Storm	6	5	30	As sirajgonj is in the part vof the country where CDD is very common phenomenon
Cold Wave	9	7	56	

### Scenario Analysis:

#### Pabna:

Disaster Scenario	Probability (1-10)	Impact(1-10)	Risk level	Comments
Flood	8	8	64	Bogra is the most flood prone area
River erosion	8	7	56	Some Upazilas are located at the bank of jamuna river
Storm	5	7	35	As sirajgonj is in the part vof the country where CDD is very common phenomenon
Cold Wave	9	7	63	

### The top three high-risk scenarios that will direct the rest of the EPP are

Disaster	Year	Killed	Total. affected population	Mostly affected sector ( e.g. WASH, Shelter and Food security )	Total. Damaged amount
Flood	2014	20	310000	Agriculture, livelihood, water & sanitation, shelter	150Crore
River Erosion	2015		20000	Agriculture, livelihood, water & sanitation, shelter	10 Crore
Cold wave	2014-15	5	100000	Agriculture, livelihood,	10 crore

## 4. NDP capacity to response (Exercise ) Link to

NDP has been working in 5 districts for 26 years helping poor communities in Social, Economic, Livelihoods, Agricultural, Climate change and Environment . NDP's capacity in the country is significant, with over 792 staff with management and technical expertise and over 518 volunteers working in over 2171 villages across the working area . Most of these eligible staff can be quickly mobilized for emergency response. NDP has 52 offices in 5 districts of two divisions of country divisions in the country. This includes a well established management and logistics infrastructure including experienced program and support staff, vehicles, office buildings, financial management and accountability systems and procedures. NDP has a good understanding of the particular operating context in Sirajgonj, Bogra, Nator, Pabna and Jamalpur district and is able to successfully implement programs.

NDP's capacity in his working areas including significant experience, delivering emergency relief including delivery of food, water and shelter, emergency relief programs with local administration/ union parisad.

### A. Country Office Rapid Capacity Assessment Questionnaire

Complete the following information, respond to all questions (including 'n/a' if any questions are not applicable), and return the completed questionnaire to the Lead Member and CEG within two days after the emergency alert and preferably before CCG meeting.

**Country Office:** \_\_\_\_\_ **Date:** \_\_\_\_\_

**Emergency name and type:** \_\_\_\_\_

**Name of person and office completing questionnaire:** -----

\* **Four Levels** are possible and these are described below:

**4. Outstanding Competence (Level 4): Sustainability**

Indicates a high level of competencies required to achieve identified functional outcomes.

Indicates that the team is not only able to consistently perform tasks at the level defined, but also able to sustain capability at the field level. These teams/individuals could also be considered as a resource for a regional or global roster.

**3. Strong Competence (Level 3): Observable and Consistent**

Indicates that the team is able to consistently meet the stated standards of competency; there is acceptable evidence of meeting the components of competence required. However, they need to put in processes to sustain the skills internally (through mentoring, coaching, formal training, M&E capability within various members of the team)

**2. Moderate Competence (Level 2): Observable Evidence but not Consistent**

Indicates that: some of the competency components may be observable, but others are not at the level required; functional outcomes are met in some instance, but cannot be assured; competencies may not be spread across the entire team

**Low Competence (Level 1): Inconsistent or Anecdotal Evidence**

Indicates that some of the standards for the functional areas may or may not be achieved due to the observable gaps in competencies in several area

Question	Level (1-2-3-4)	Comment / Gaps / Needs
<b>1. Assessment:</b> Staffing capability and resources to conduct rapid, high-quality and participatory emergency assessments (covering disaster impact, humanitarian needs, coping mechanisms and local response capacity)?	3	
<b>2. Response:</b> Ability to develop immediate emergency response plans and program strategies?	3	Skilled staff are available in the organization
<b>3. Coordination &amp; Leadership:</b> Ability and resources to coordinate its response with multi-lateral coordination mechanisms and with local authorities, the UN, donors and other implementing agencies (internally with CI and externally)?	3	
<b>4. Program management:</b> Adequate staffing, technical ability and funds to provide overall emergency program management?	2	
<b>5. Project development:</b> Technical ability to rapidly develop high-quality project designs utilizing participatory methods, Sphere Minimum standards and CARE program principles that demonstrate accountability to aid recipients?	2	

Question	Level (1-2-3-4)	Comment / Gaps / Needs
<b>6. Humanitarian accountability:</b> Adequate systems, including monitoring and evaluation systems, and procedures in place to ensure accountabilities to recipients of aid? (Accountability mechanisms should be established from the design stage and followed up on an ongoing basis)	2	
<b>7. Fundraising:</b> Technical ability and funds to link with donors develop funding proposals and meet donor requirements?	2	
<b>8. Reporting:</b> Expertise to prepare timely and high-quality program reports, to respond to CI members' and donors' information requests and be held accountable to donors and CI members?	3	
<b>9. Media &amp; Information:</b> Ability to meet immediate and ongoing information and media requirements including timely high-quality scripts, photos, press statements, human interest stories, etc. including in multiple languages?	2	
<b>10. Advocacy:</b> Ability to analyze policy issues, assess risks, and develop appropriate policy and advocacy positions and materials?	2	
<b>11. Project implementation and management:</b> Ability to implement and manage emergency projects effectively and with high quality and accountability? (including scale up and transition programming)	3	
<b>12. Safety and security:</b> Required staffing, technical ability, established systems and funds to assess and ensure staff safety and security?	2	
<b>13. Telecommunications:</b> Equipment, staffing, technical ability and funds to ensure effective voice and data communications (including expansion of systems into new operational areas w. potentially limited functioning communications infrastructure)?	2	
<b>14. Logistics and procurement:</b> Emergency stockpiles, supply chain management systems in place (procurement–transport–storage–distribution–reporting), and trained staff to effectively and quickly transition to manage emergency logistics?	3	
<b>15. Financial and contract management:</b> Funds and contract management capability and monitoring system to ensure accountability (e.g. new donors with different requirements, shorter PCM turnaround with tighter deadlines and overall higher level of transactions to be managed)?	3	
<b>16. Human resources recruitment and management:</b> Technical ability and data bank to recruit, employ, and manage emergency personnel in a timely and effective manner (e.g. significant scale up, orientation of staff)	3	
<b>17. Staff well-being and support:</b> Required policies, procedures, support mechanisms to provide high-quality support to its emergency staff? (e.g. accommodation, leave, travel, etc)	3	
<b>18. Administrative support:</b> capacity to provide all areas of administrative support to its emergency program	3	

Question	Level (1-2-3-4)	Comment / Gaps / Needs
<b>19. Transition and recovery:</b> Ability to effectively design and implement the transition phase of an emergency (capacity to transition into longer term rehabilitation)	3	
<b>20. Capacity-building and learning:</b> Does the HO have sufficient capacities in place or support required for quality performance in both emergency preparedness & response	3	
<b>21. Program principles:</b> Does the HO have the capacity to ensure compliance of CI program principles in emergency response?		
<b>22. Gender:</b> Does the CO have the capacity to develop and implement gender sensitive emergency programs? (e.g. gender composition and balance on team)	2	

## 5. Emergency response strategy

### 5.1. Scenario description and needs analysis

Insert a few paragraphs describing the scenario, using the following guiding questions: What is the disaster that is occurring? Why is the disaster occurring? When it is happening? How long may it last? Who is being affected? How many people are being affected? What are the most immediate needs? What are the long-term needs of the affected population? Complete the following chart:

Hazard specific (e.g. flood, cyclone etc)

**Flood:**

Flood	Geographic area 1	Geographic area 2	Geographic area 3	Geographic area 4
<b>Geographic areas likely to be affected</b>	Sirajgonj	Bogra	Pabna	Natore
<b>Total population in that area</b>	32,20,814	35,39,294	2624684	23,84,810
<b>Estimated affected population in area</b>	1388300	400000	100000	800000
<b>Estimated number of women affected</b>	600000	200000	500000	400000
<b>Estimated number of children affected</b>	120000	50000	50000	80000
<b>Other groups that are likely to be affected</b>	20000	20000	50000	20000

**River erosion:**

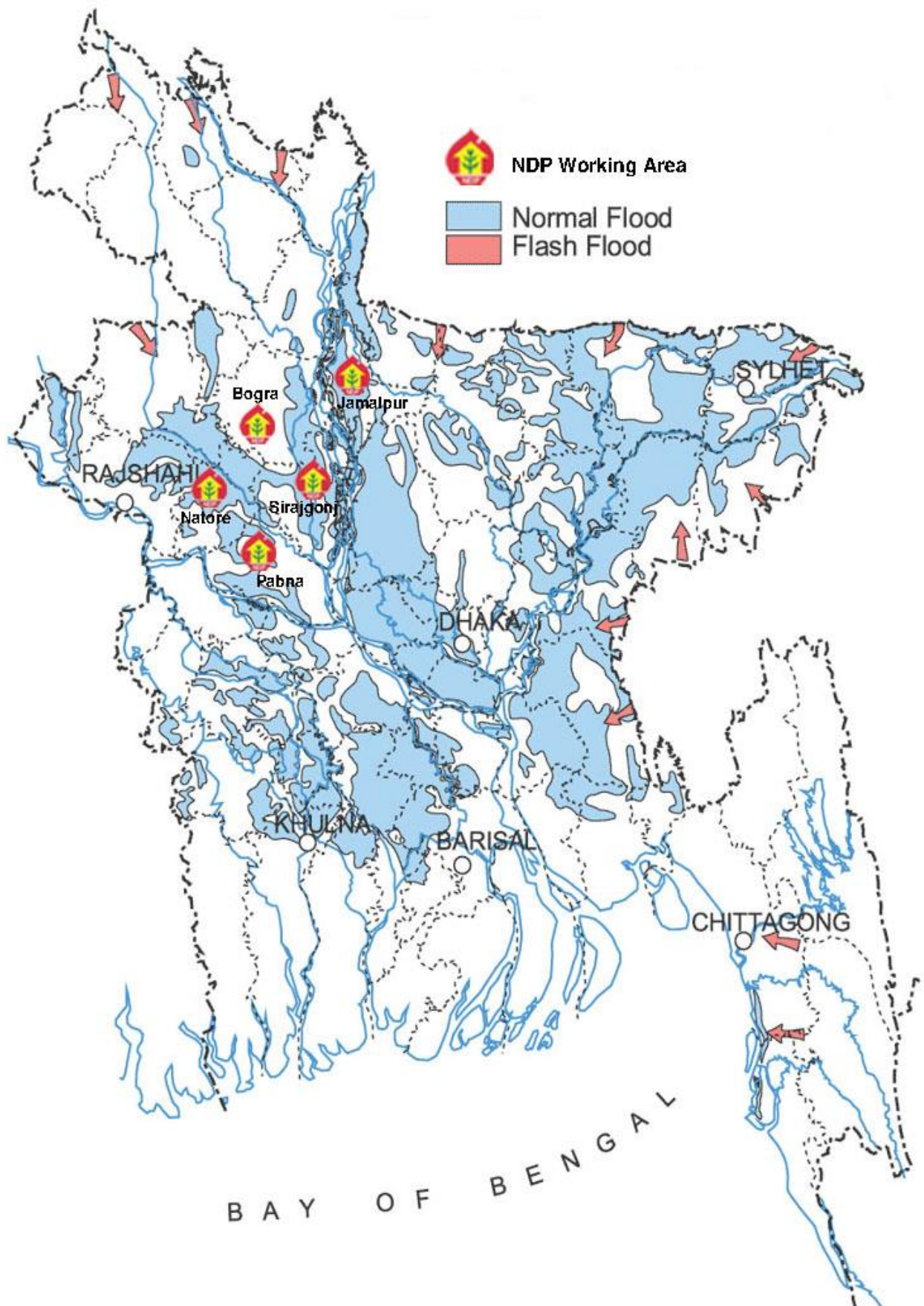
River Erosion	Geographic area 1	Geographic area 2	Geographic area 3
<b>Geographic areas likely to be affected</b>	Sirajgonj	Bogra	Pabna
<b>Total population in that area</b>	32,20,814	35,39,294	2624684
<b>Estimated affected population in area</b>	1388300		
<b>Estimated number of women affected</b>	600000		

<b>Estimated number of children affected</b>	200000		
<b>Other groups that are likely to be affected</b>	20000		

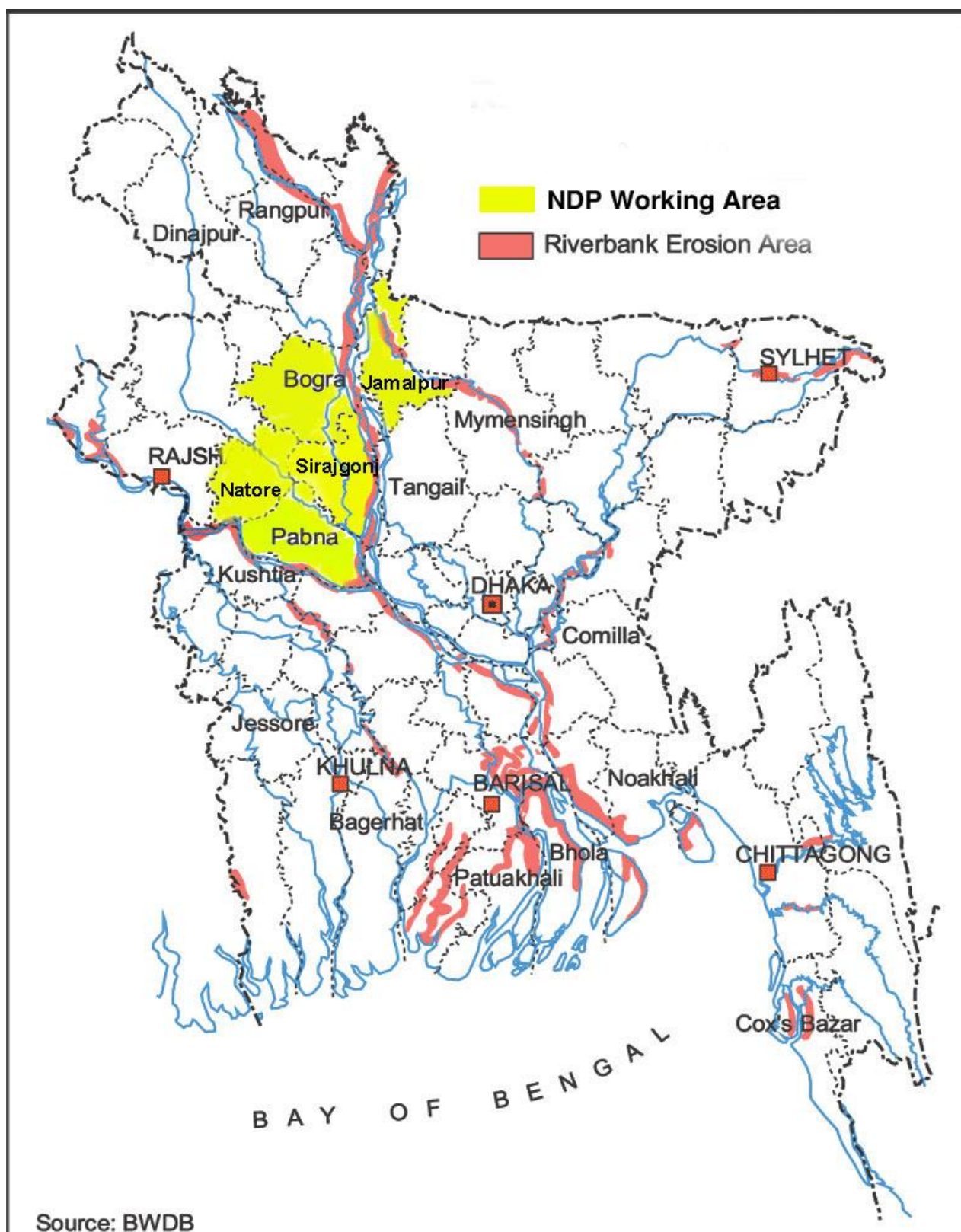
**Cold Wave:**

Cold wave	<b>Geographic area 1</b>	<b>Geographic area 2</b>	<b>Geographic area 3</b>	<b>Geographic area 4</b>
<b>Geographic areas likely to be affected</b>	Sirajgonj	Bogra 5 Upazila	Pabna 6 Upazila	Natore 5 Upazila
<b>Total population in that area</b>	3220814	3539294	2624684	2384810
<b>Estimated affected population in area</b>	300000	150000	200000	100000
<b>Estimated number of women affected</b>	150000	80000	100000	50000
<b>Estimated number of children affected</b>	50000	50000	50000	20000
<b>Other groups that are likely to be affected</b>	15000	10000	10000	5000

Map-01



Map-02



**Complete the following matrix by identifying the impact of the disaster on each area or consideration:**

<b>Areas of consideration</b>	<b>Impact (if applicable)</b>
<b>Livelihoods</b> – local, regional and national economy; household income; poverty level.	- Decrease working opportunity and income
<b>Food security</b> - food production & supply, food prices, agriculture production, livestock breeding, market disruptions.	- Increase food insecurity and food price: Decrease agricultural production
<b>Water and Sanitation</b> – water supplies, sanitation systems, hygiene practices	- Scarce of pure drinking water, Water pollution, Submerged sanitation.
<b>Shelter</b> – dwellings, buildings, need for temporary shelter	- Damaged dwelling by flood.
<b>Health</b> – health care systems, disease outbreaks.	- Health hazard , Skin disease, Diarrhea
<b>Infrastructure</b> - roads, buildings, power lines, water systems, communications.	- Improper infrastructure facilities
<b>Environment</b> – land, water, and other natural resources	- Water pollution, soil pollution
<b>Education</b> – school disruptions or closures	- Increase dropout: Institution used as shelter
<b>Governance</b> - disruption of local or national government services, political tensions, regional implications.	-
<b>Cultural context</b> - Ethnic tensions, violence, conflicts over water, land or other resources	- N/A
<b>Safety and security</b>	- Insecure flood affected people
<b>Impact on women</b>	- Woman trafficking, Malnutrition, Periodical problem, Pregnancy and child care
<b>Vulnerability of the community</b>	- Increase any occurrence and incidence, Unhygienic , disruption of governance
<b>Coping strategies of men and women</b>	- Migration for work, Food preservation during alert

## 5.2 Early warning and trigger indicators

*This section is optional because it does not apply to all scenarios.* If monitoring a slow-onset disaster, briefly describe the early warning systems and trigger indicators. Complete the table below:

<b>Indicator</b>	<b>Critical value</b>	<b>Source of information</b>	<b>Location monitored</b>	<b>Monitoring Frequency</b>	<b>NDP staff responsible</b>
Flood	115 cm over the danger level.	WDB, FFWC, Local informar	Sirajgonj	daily	Atiqur Rahman
Flood	95 cm over the danger level.	WDB, FFWC, Local informar	Pabna	daily	Atiqur Rahman
River Erosion		WDB, Local informar	Sirajgonj		Molla Atiqur Rahman
Cold wave	below 10 degree		5 district	daily	Atiqur Rahman

## a. Goals and objectives of NDP response

*The goal of NDPs response is to meet the immediate needs of the most vulnerable populations, especially women and girls, affected by Flood and support affected communities to recover from the impacts of the disaster, over the medium and long term.*

## b. Proposed NDP response:

	<b>Geographic area 1/ Working Area</b>	<b>Geographic area 2/ Working Area</b>	<b>Geographic area 3/ Working Area</b>	<b>Geographic area 4/ Working Area</b>
<b>Geographic areas where NDP would intervene with relief activities</b>	Sirajgonj	Bogra	Pabna	Natore
<b>Estimated # of affected population</b>	1388300	400000	100000	120000
<b># of beneficiaries to be targeted by NDP</b>	150,000	10000	30000	10000
<b>Type of beneficiaries to be targeted by NDP</b> (e.g. poor families who lost their houses; poor widows and female headed families; poor families with children who have not received support from other organizations, etc.)	Flood affected people specially Woman, Children, Disabled, Older  Cold wave affected poor and ultra poor specially Woman, Children, Disabled, Older, Widow.	Flood affected people specially Woman, Children, Disabled, Older  Cold affected poor and ultra poor specially Woman, Children, Disabled, Older, Widow.	Flood affected people specially Woman, Children, Disabled, Older  Cold wave affected poor and ultra poor specially Woman, Children, Disabled, Older, Widow.	Cold wave affected poor and ultra poor specially Woman, Children, Disabled, Older, Widow.
<b>Sector of NDP Intervention</b> (List specific activities where applicable):				
Water	Supply pure drinking water	Supply pure drinking water	Supply pure drinking water	Supply pure drinking water
Sanitation	Install temporary toilet	Install temporary toilet	Install temporary toilet	Install temporary toilet
Non-Food Items and Shelter	Candle, sanitary accessories, Fire box, Cloths, Blanket	Candle, sanitary accessories, Fire box, Cloths, Blanket	Candle, sanitary accessories, Fire box, Cloths, Blanket	Candle, sanitary accessories, Fire box, Cloths, Blanket
Food Security	Dry food, Rice, Pulse, Oil.Salt,	Dry food, Rice, Pulse, Oil.Salt,	Dry food, Rice, Pulse, Oil.Salt,	Dry food, Rice, Pulse, Oil.Salt,
Health and Nutrition	Saline, Water purifying tablets, BP 5 Biscuit	Saline, Water purifying tablets, BP 5 Biscuit	Saline, Water purifying tablets, BP 5 Biscuit	Saline, Water purifying tablets, BP 5 Biscuit
Psychosocial	Awareness	Awareness	Awareness	Awareness
Education				
Environment	Conservation	Conservation	Conservation	Conservation
Economic Development/ Livelihoods	Cash for work, Micro Credit, IGA Support	Cash for work, Micro Credit, IGA Support	Cash for work, Micro Credit, IGA Support	
Other:				

For each geographic area describe what resources are available to ensure strong monitoring and evaluation practices are in place, such as a baseline from an existing project or trained community workers who are able to quickly collect information and carry out an assessment, etc.

- Established office setup, Trained staff, Skilled community volunteers, Good relationship with local administration.

#### **Food Package per Family. (First 07 days)**

<b>Items</b>	<b>Quantity per Package</b>	<b>Targeted Families</b>	<b>Total Quantity Required</b>	<b>Total Amount (US\$)</b>
Baby Food	04 kgs	300000	12,00,000 kgs	1923076
Chira	5 kgs	570000	2850,000 kgs	29,23,076
Molasses	01 kg	570000	570,000 kgs	5,84,615
Fire Boxes	06 pcs	570000	34,20,000 pcs	43,856
Candle	06 pcs	570000	34,20,000 pcs	2,19,230
Cotton Towel	01 pc	570000	570000pcs	3,65,384
<b>Total</b>				<b>6059237</b>

#### **Food Package per Family (Next 10 days)**

<b>Items</b>	<b>Quantity per Package</b>	<b>Targeted Families</b>	<b>Total Quantity Required</b>	<b>Total Amount (US\$)</b>
Rice	20 kgs	570000	11,400,000 kgs	55,53,846
Pulses	02 kgs	570000	11,40,000kgs	17,53,846
Salt	02 kgs	570000	11,40,000 kgs	2,92,307
Edible Oil	01 Liter	570000	570000 liters	8,76,923
Potato	05 kgs	570000	28,50,000 kgs	9,13,461
Cloths	01 pc	570000	570000pcs	36,53,846
Sanitary Item	01 pc	570000	570000pcs	3,65,384
Medical Item (ORS, WPT, Others medicine )	1 Package	570000	570000 packages	2,92,307
<b>Total</b>				<b>13701920</b>

#### **Blanket Distribution (During Cold wave)**

<b>District</b>	<b>Targeted Families</b>	<b>Total Quantity Required</b>	<b>Cost /Unit (US\$)</b>	<b>Total Amount (US\$)</b>
Sirajgonj	20000	20000	3.2	64000
Bogra	5000	5000	3.2	16000
Pabna	6000	6000	3.2	19000
Nator	5000	5000	3.2	16000
<b>Total</b>				<b>115200</b>

## Emergency stocks

Sl no.	Departments/Sections	Items	Quantity of materials and location		
			Central	Community	Total
01	Emergency materials	ORS	6100		6100
02	Emergency materials	WPT	2200		2200
03	Emergency materials	Polythene rolls	77 role		77 role
04	Emergency materials	Bleaching powder	10 Drum		10 Drum
05	Emergency materials	Alum	28 bag		28 bag
06	Emergency materials	Life jacket	27		27
07	Emergency materials	Life boya	27		27
08	Emergency materials	Rain coat	07		07
09	Emergency materials	Torch light	18		18
10	Emergency materials	Umbrella	27		27
11	Emergency materials	First Aid box	17		17
12	Emergency materials	Megaphone	07		07
13	Emergency materials	Gum boot	11 pair		11 pair
14	Emergency materials	Delivery kit	10 nos.		10 nos.
15	Emergency materials	Nipple pipe (G I pipe-5 feet)	24 nos.		24 nos.
16	Emergency materials	Tube well pipe (15 feet)	164		164
17	Emergency materials	Tube well head	63		63
18	Emergency materials	Badna	55		55
19	Emergency materials	Hijack light	07		07
20	Emergency materials	Hurricane	15		15
21	Emergency materials	Radio	23		23
22	Emergency materials	Gas cylinder with burner	01		01
23	Emergency materials	Nipple pipe(small)	48		48
24	Emergency materials	Weight machine	05		05
25	Emergency materials	Tube –well filter	98		98
26	Emergency materials	I V Fluid -1000	52		52
27	Emergency materials	I V Fluid-500	51		51
28	Emergency materials	Savlon (tube)	79		79
29	Emergency materials	Savlon (bottle)	27		27
30	Emergency Drug	Antiseptic	--		
31	Emergency Drug	Levamisole	96		
32	Emergency Drug	Albendazole	00		
33	Emergency Drug	Cholera Saline (100 cc)	--		
34	Emergency Drug	Butterfly Needle	--		
35	Emergency Drug	IV Saline 5% D/A 1000 cc	--		
36	Emergency Drug	Diclofenac (50 mg)	50		
37	Emergency Drug	Ranitidin	419		
38	Emergency Drug	Entacid	900		
39	Emergency Drug	Savlon (Anticeptic)	--		
40	Emergency Drug	Antihistamin	00		
41	Emergency Drug	Salbuiteamol	00		
42	Emergency Drug	Iron Tablet	2000		
43	Emergency Drug	Benzyl Benzoate	--		

Sl no.	Departments/Sections	Items	Quantity of materials and location		
			Central	Community	Total
44	Emergency Drug	Gention Violet (Dry)	--		
45	Emergency Drug	Paracetamol	1982		
46	Emergency Drug	ORS (oresaline)	23880		
47	Emergency Drug	Cotrimoxazole			
48	Emergency Drug	Metroindazol			
49	Emergency Drug	CholoramphenicolS			

### Preferred vendors list:

Name & Address of Vendors	Contact Number	Items available	Quantities available within 48-hours notice
ABC Computer, SR-218 , IDB Bhaban, Dhaka	02-9002652	Computer & Accsories	100 % of requirements may full filled
North Bengal Cycle Industries Ltd, Gorai, Mizapur, Tangail	9898592	Cycle Items	100 % of requirements may full filled
Mamun Medical 2no Khalifaproti, Sirajgonj	0171-385341	Medicine Items	100 % of requirements may full filled
Swadagar Furniture, S,B Fazlul Haque Road, Sirajgonj	01712-101282	Various Furniter Items	100 % of requirements may full filled
Faisal Enterprize, S,B Fazlul Haque Road, Sirajgonj	01925070470	Various Furniter Items	100 % of requirements may full filled
Bogra Bag House, Station Road, Bogra	01713-420581	Bags Items	100 % of requirements may full filled
Sirajgonj Chair House, S,B Fazlul Haque, Sirajgonj	01558-314030	Various Furniter Items	100 % of requirements may full filled
M/S Aishi Motors, S,S Road, Sirajgonj	01711-902700	The Items of Motor Bike	100 % of requirements may full filled
Bangladesh Paper House, S,S Road Sirajgonj	01712-011229	Stationary Items	100 % of requirements may full filled
Dhaka Bez Vander, M,A Motin Sarak, Sirajgonj	01711-021236	Seed Items,Pestrisge	100 % of requirements may full filled
Rudda Enterprize, New Bogra Road, Sirajgonj	01716-121542	General Supplier	100 % of requirements may full filled
Joynob Traders, 1 No. Khalifaprotti, Sirajgonj	01715-386062	Cycle Items	100 % of requirements may full filled
Looknath Alomonium Store, S,S Road, Sirajgonj	01915-555650	Kokaries Items	100 % of requirements may full filled
Kagoj Bitan, B,A Collage Road, Sirajgonj	01711-366224	Stationary Items	100 % of requirements may full filled
Bismilla Printing Press & Sationary, Mujib Sarak, Sirajgonj	01915-203026	Stationary Items	100 % of requirements may full filled
The Access pvt, Ltd, IDB Bhaban, Dhaka	01911-050709	Computer & Accsories	100 % of requirements may full filled
Choice Art, Mujib Sarak, Sirajgonj	01558-587368	Baner, Bill Board, Sign Board etc.	100 % of requirements may full filled

<b>Name &amp; Address of Vendors</b>	<b>Contact Number</b>	<b>Items available</b>	<b>Quantities available within 48-hours notice</b>
Vanu Kukaries, S,S Road Sirajgonj	01715-134595	Kokaries Items	100 % of requirements may full filled
Chas Ghar,S,S Road, Sirajgonj	01712-048969	Glass Items	100 % of requirements may full filled
Yamaha Sales Center, S,S Road Sirajgonj	01712-292052	The Items of Motor Bike	100 % of requirements may full filled
Monuar, Shialkol,Sirajgonj		General Supplier	100 % of requirements may full filled
Udvaban Printers, B,A Collage Road , Sirajgonj	01199-457041	Priting Press	100 % of requirements may full filled
Sarker Art Press, 1no Khalifaprotti, Sirajgonj	01712-021174/01914-217762	Priting Press	100 % of requirements may full filled
Reneta, Renata ltd, Sirajgonj	01819-558874	Medicine Items	100 % of requirements may full filled
Sunlife Madical,2no Khalifaprotti, Sirajgonj	01716-024215	Medicine Items	100 % of requirements may full filled
Square Pharaceutical Ltd, Sirajgon Area ,Sirajgonj		Medicine Items, man/ Live stock	100 % of requirements may full filled
Alauddin Store, S,S Road Sirajgonj	01712-584396	Food Items	100 % of requirements may full filled
Abdulla Store, Bazar Station, Sirajgonj	01712-123642	Food Items	100 % of requirements may full filled
Adar Shohagh, Muktaplaz More, Sirajgonj		Food Items	100 % of requirements may full filled
Khan Con, Bagbari, Kamarkhando, Sirajgonj	01711-208260	General Supplier	100 % of requirements may full filled
Saimum Enter Prize, Kamarkhand, Sirajgonj	01718-570197	General Supplier	100 % of requirements may full filled
K,M, Shahin Raza, Paikusha, Kamarkhando, Sirajgonj	01718-996513	General Supplier	100 % of requirements may full filled
M,K Traders, Sirajgonj	01767-471350	General Supplier	100 % of requirements may full filled
Mondol Traders, Dhalarshe, Kamarkhando, Sirajgonj	01727-126150	Seed Items,Pestrisge	100 % of requirements may full filled
Bhasundhara Traders, Kodder More, Sirajgonj	01913-273609	Seed Items,Pestrisge	100 % of requirements may full filled
Digital Message, Chaljadu Road, Bogra	01711-315937	Printing Press	100 % of requirements may full filled
Shohel Traders, S,S Road, Sirajgonj	01721-221544	Tin and corg sheet	100 % of requirements may full filled
Showhan Iron, New Dhaka road, Sirajgonj	01721-221544	Road, Cememt	100 % of requirements may full filled
Shimi Traders, Paikusha Bazar, Sirajgonj	01711-208260	Road, Cememt, balu	100 % of requirements may full filled
Malaker Traders, Sirajgonj		Brick	100 % of requirements may full filled

<b>Name &amp; Address of Vendors</b>	<b>Contact Number</b>	<b>Items available</b>	<b>Quantities available within 48-hours notice</b>
R N & Brothers, New Dhaka Road Sirajgonj	01711-941324	Brick	100 % of requirements may full filled
Rabbi Traders, 1no Khalifaprotti, Sirajgonj	01712-390135	Sanitaery/ Tails Goods	100 % of requirements may full filled
National Tails, S,S Road, Sirajgonj	01711-451633	Tails, Sanitaery Goods	100 % of requirements may full filled
Gosh Traders, S,B Fazlul Haque Road, Sirajgonj	01912-241530	Paints,	100 % of requirements may full filled
New Gosh Traders, S,B Fazlul Haque Road, Sirajgonj	01913-454760	Paints,	100 % of requirements may full filled
Nirab Thai, Gila, Sirajgonj	01712-4071654	Thai Glass	100 % of requirements may full filled

If pre-supply agreements exist, attach contact info, quotes, and other relevant information.

### **c. Logistics and equipment requirements**

<b>Item or need</b>	<b>Geographic location</b>	<b>Quantity needed</b>	<b>Description (when, how long, etc)</b>	<b>Where to source (existing within NDP, implementing partner, UN/NGOs, available in local market, available nationally, need to be imported, etc)</b>
<b>Office</b>	Sirajgonj, Bogra, Pabna, and Natore district	52	NDP has existing office in all upazilas	Existing/ Available
<b>Guesthouse</b>		52		Existing/ Available
<b>Warehouse</b>	Sirajganj, Pabna, Bogra,	4	During emergency, 1 Month	Existing 1 and will be rent 3
<b>Vehicles</b>		15		Will be rent 15 track
<b>Transportation</b>				
<b>Computers</b>		52		Existing/ Available
<b>Cell phones</b>		260		Existing/ Available
<b>Sat Phones</b>				N/A
<b>Radios</b>				N/A
<b>Other:</b>				
<b>Other:</b>				

**d. Funding target: (For 30 days)**

Item description	Unit measure	Number of units	Cost per unit (US\$)	Total cost (US\$)
<b>NDP Staff Benefits (Volunteer service)</b>	Person	677	3	60930
<b>Staff travel and lodging</b>	person	677	1.5	30465
<b>Relief Materials (Dry Food Item)</b>	Kg.	12030000	1.98	6059237
<b>Relief Materials ( Food Item)</b>	Kg.	17100000	1.82	9390383
<b>Relief Materials ( Cloths Item)</b>	Pcs	570000	6.4	3653846
<b>Relief Materials ( Sanitary Item)</b>	Pcs	570000	1.5	365384
<b>Relief Materials ( Medical Item)</b>	Packages	570000	1.95	292307
<b>Handling and Transportation (Vehicle rent, Loading-unloading etc</b>	Number	10 Vehicle	3076	30769
<b>Operational and support costs - (Warehouse , Night guard , Supporting staff and others)</b>	Number	4 Warehouse		3846
				<b>13766696</b>
<b>Shared costs</b>				
<b>Indirect Cost Recovery (ICR)</b>				
<b>TOTAL COSTS</b>				
<b>Number of Beneficiaries</b>		670000		
<b>Cost per beneficiary</b>				

This concludes the Emergency Response Strategy for Disaster Scenario 1. Please complete the same Emergency Response Strategy steps for Disaster Scenarios 2 and 3.